

# SUBCON-SHORT-SCREW - Screw



2799694

<https://www.phoenixcontact.com/us/products/2799694>

Please be informed that the data shown in this PDF document is generated from our online catalog. Please find the complete data in the user documentation. Our general terms of use for downloads are valid.



Optional mounting screw, without knurl for narrow installation conditions, slotted head, length: 40 mm, UNC 4-40 thread Supplied as standard: 1 bag of 20 screws

## Commercial data

Item number	2799694
Packing unit	1 pc
Minimum order quantity	1 pc
Sales key	DN10
Product key	DNC5Z1
Catalog page	Page 450 (C-6-2019)
GTIN	4017918155759
Weight per piece (including packing)	39.1 g
Weight per piece (excluding packing)	37 g
Customs tariff number	74153300
Country of origin	DE

# SUBCON-SHORT-SCREW - Screw

2799694

<https://www.phoenixcontact.com/us/products/2799694>



## Technical data

### Product properties

Product type	Mounting material
--------------	-------------------

### Dimensions

Length	40 mm
--------	-------

# SUBCON-SHORT-SCREW - Screw



2799694

<https://www.phoenixcontact.com/us/products/2799694>

## Classifications

### ECLASS

ECLASS-11.0	27440290
ECLASS-12.0	27440290
ECLASS-13.0	27440290

### ETIM

ETIM 8.0	EC002943
----------	----------

### UNSPSC

UNSPSC 21.0	39121400
-------------	----------

# SUBCON-SHORT-SCREW - Screw



2799694

<https://www.phoenixcontact.com/us/products/2799694>

## Environmental product compliance

China RoHS	Environmentally friendly use period: unlimited = EFUP-e
	No hazardous substances above threshold values

# SUBCON-SHORT-SCREW - Screw

2799694

<https://www.phoenixcontact.com/us/products/2799694>

## Accessories

### SUBCON-PLUS 9/M - D-SUB bus connector

2744018

<https://www.phoenixcontact.com/us/products/2744018>



D-SUB connector, 9-pos., male connector, two 35° cable entries, universal type for all systems, pin assignment: 1, 2, 3, 4, 5, 6, 7, 8, 9 to one screw connection terminal block

---

### SUBCON-PLUS F4 - D-SUB bus connector

2744089

<https://www.phoenixcontact.com/us/products/2744089>



D-SUB connector, 9-pos. female connector, two 35° cable entries, bus system: CAN, KEBA up to 1 Mbps, pin assignment: 2, 3, 4, 5, 6, 7; screw connection terminal blocks

# SUBCON-SHORT-SCREW - Screw

2799694

<https://www.phoenixcontact.com/us/products/2799694>

## SUBCON-PLUS F5 - D-SUB bus connector

2744102

<https://www.phoenixcontact.com/us/products/2744102>



D-SUB connector, 9-pos. female connector, two cable entries < 35°, bus system: Modbus, CEGELEC, pin assignment: 1, 1, 2, 3, 6, 7; screw connection terminal blocks

---

## SUBCON-PLUS 9/F - D-SUB bus connector

2744241

<https://www.phoenixcontact.com/us/products/2744241>



D-SUB connector, 9-pos. female connector, two 35° cable entries, universal type for all systems, pin assignment: 1, 2, 3, 4, 5, 6, 7, 8, 9 to one screw connection terminal block

# SUBCON-SHORT-SCREW - Screw

2799694

<https://www.phoenixcontact.com/us/products/2799694>

## SUBCON-PLUS F1 - D-SUB bus connector

2744267

<https://www.phoenixcontact.com/us/products/2744267>



D-SUB connector, 9-pos. female connector, two 35° cable entries, bus system: Modbus, Modbus Plus, BITBUS, ARCNET, MULT/MININET (B&R), SYSTEM 2003 (B&R), P-NET, pin assignment: 1, 2, 3, 5, 6, 8; screw connection terminal blocks

---

## SUBCON 9/F-SH - D-SUB bus connector

2761499

<https://www.phoenixcontact.com/us/products/2761499>



D-SUB plug, 9-pos. female connector, one 35° cable entry, universal type for all systems, pin assignment: 1, 2, 3, 4, 5, 6, 7, 8, 9 to screw connection terminal block

# SUBCON-SHORT-SCREW - Screw

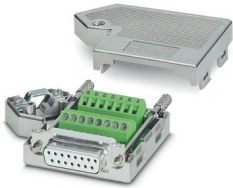
2799694

<https://www.phoenixcontact.com/us/products/2799694>

## SUBCON 15/F-SH - D-SUB bus connector

2761596

<https://www.phoenixcontact.com/us/products/2761596>



D-SUB connector, 15-pos. female connector, one 35° cable entry, universal type for all systems, pin assignment: 1, 2, 3, ..., 14, 15 to screw connection terminal block

---

## SUBCON 15/M-SH - D-SUB bus connector

2761606

<https://www.phoenixcontact.com/us/products/2761606>



D-SUB connector, 15-pos. male connector, one 35° cable entry, universal type for all systems, pin assignment: 1, 2, 3, ..., 14, 15 to screw connection terminal block



# SUBCON-SHORT-SCREW - Screw

2799694

<https://www.phoenixcontact.com/us/products/2799694>

## SUBCON 25/F-SH - D-SUB bus connector

2761619

<https://www.phoenixcontact.com/us/products/2761619>



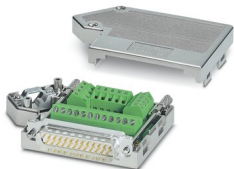
D-SUB connector, 25-pos. female connector, one 35° cable entry, universal type for all systems, pin assignment: 1, 2, 3, ..., 24, 25 to screw connection terminal block

---

## SUBCON 25/M-SH - D-SUB bus connector

2761622

<https://www.phoenixcontact.com/us/products/2761622>



D-SUB connector, 25-pos., male connector, one 35° cable entry, universal type for all systems, pin assignment: 1, 2, 3, ..., 24, 25 to screw connection terminal block

# SUBCON-SHORT-SCREW - Screw

2799694

<https://www.phoenixcontact.com/us/products/2799694>

## SUBCON-PLUS M1 - D-SUB bus connector

2761826

<https://www.phoenixcontact.com/us/products/2761826>



D-SUB connector, 9-pos., male connector, two 35° cable entries, bus system: Modbus, Modbus Plus, BITBUS, ARCNET, MULT/MININET (B&R), SYSTEM 2003 (B&R), P-NET, pin assignment: 1, 2, 3, 5, 6, 8 to two screw connection terminal blocks

---

## SUBCON-PLUS M2 - D-SUB bus connector

2761839

<https://www.phoenixcontact.com/us/products/2761839>



D-SUB connector, 9-pos., male connector, two 35° cable entries, bus system: CAN, SUCONET K1, K2 (MOELLER), S-BUS (Saia), J-BUS (Merlin Gerin), pin assignment: 2, 3, 4, 5, 7, 9 to two screw connection terminal blocks

# SUBCON-SHORT-SCREW - Screw

2799694

<https://www.phoenixcontact.com/us/products/2799694>

## SUBCON-PLUS F3 - D-SUB bus connector

2761871

<https://www.phoenixcontact.com/us/products/2761871>



D-SUB connector, 9-pos. female connector, two cable entries < 35°, bus system: CANopen, FIP, pin assignment: 2, 3, 6, 7, 8, 9 to two screw connection terminal blocks

---

## SUBCON-PLUS F2 - D-SUB bus connector

2799490

<https://www.phoenixcontact.com/us/products/2799490>



D-SUB connector, 9-pos. female connector, two 35° cable entries, bus system: CAN, SUCONET K1, K2 (MOELLER), S-BUS (Saia), J-BUS (Merlin Gerin), pin assignment: 2, 3, 4, 5, 7, 9 to two screw connection terminal blocks

# SUBCON-SHORT-SCREW - Screw

2799694

<https://www.phoenixcontact.com/us/products/2799694>



## SUBCON-PLUS M3 - D-SUB bus connector

2744445

<https://www.phoenixcontact.com/us/products/2744445>



D-SUB connector, 9-pos., male connector, two 35° cable entries, bus system: e. g., RS-485, pin assignment: 1, 2, 3, 5, 8, 9 to two screw connection terminal blocks

---

Phoenix Contact 2023 © - all rights reserved

<https://www.phoenixcontact.com>

Phoenix Contact USA  
586 Fulling Mill Road  
Middletown, PA 17057, United States  
(+717) 944-1300  
[info@phoenixcon.com](mailto:info@phoenixcon.com)